



PROJECT PROFILE
Education

FOLLOW THE **LOGIQ**

**LEHMAN
CHILDCARE CENTER**

Child Care Center

LEHMAN COLLEGE

111



CLIENT

The City University of
New York [CUNY]

LOCATION

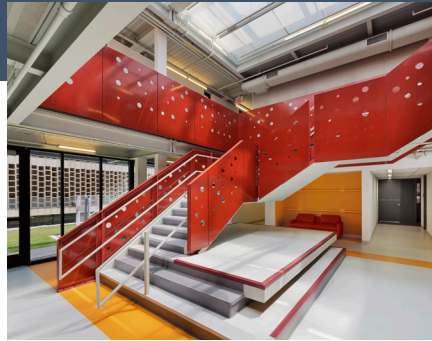
Bronx, NY

SIZE

12,000 sq. ft.

TIMELINE

44 weeks



PROJECT HIGHLIGHTS, FEATURES & BENEFITS

Building a childcare center in the tight urban space of a downtown university campus in the Bronx isn't child's play. It is, however, a whole lot easier when it's built off-site and craned into place—one module at a time—over a single week.

The architect's vision was to minimize campus disruption, maximize outdoor play areas, and build in 'best practices' in sustainability.

The 12,000 square foot facility accentuates modularity with its cantilevered upper floor and central atrium with floating staircase in the lobby.

The large atrium skylight provides natural light and passive ventilation. Interior finishes, bright and colorful, include glazed walls. The open lobby provides access and viewing for play areas.

College officials estimated that time from groundbreaking to occupancy was cut in half using MODLOGIQ'S modular manufacturing.